

# Your clients will love your gym with **Impact-Tiles**



Over **1 million Impact-Tiles** have been installed in Australian gyms in the last 10 years - **Still the #1 gym floor in Australia**

## IMPACT-TILE

Australian | Resilient | Green Certified



- **good** for the environment
- **good** for your health
- **good** for your floors
- **good** for your budget
- **good** for Australia

# IMPACT-TILE

Australian | Resilient | Green Certified



## Cushion the impact of training all day, every day

### product specifications

Impact-Tiles are composed of polymerically bound recycled rubber and EPDM colour flecks, finished at a density of 760kg/m<sup>3</sup>. All Impact-Tiles are 1m x 1m squared and 15mm thick with bevelled edges.

Impact-Tiles have been tested for slip resistance in wet and dry conditions, tensile strength, CRF fire rating and VOC emissions. Data sheets are available for technical information and testing results.

Impact-Tiles are available in three standard colours: black, black with blue speckle and black with red speckle.

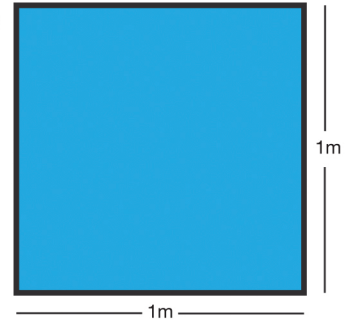
Custom coloured speckles are available upon request. Please enquire for colour options and quotation.

side view

bevelled edge



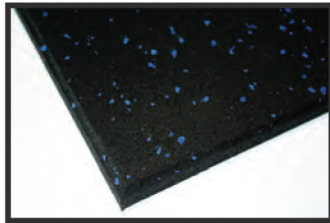
top view



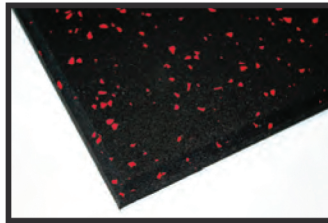
black



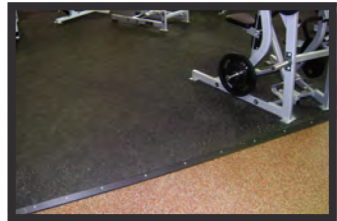
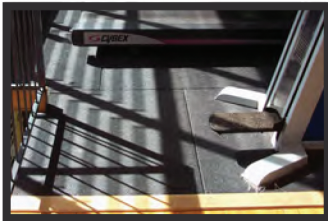
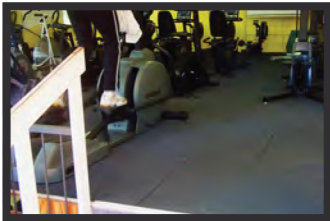
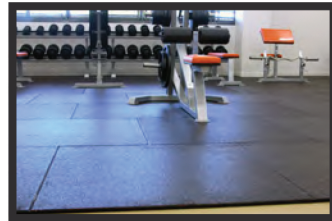
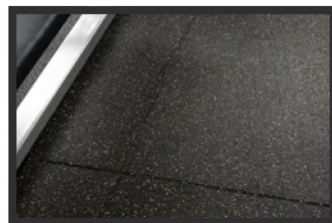
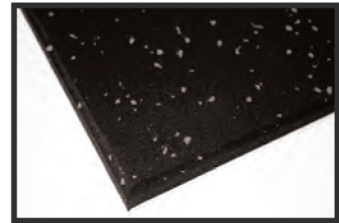
blue fleck



red fleck



grey fleck



distributed by

manufactured by

[www.a1rubber.com](http://www.a1rubber.com)

**A1 RUBBER**™  
#1 in Rubber Upcycling